



Expand your horizons ...

High quality Aluminium Door & Window Systems

Folding Doors · Slide & Turn Doors · Sliding Doors · Windows

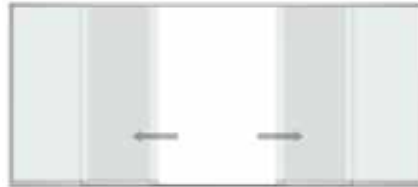
SUNFLEX 

All-Glass Sliding System SF 20

The SUNFLEX all-glass sliding system SF 20 enables the individual parallel sliding panels to be moved horizontally to either one or both sides. On opening and closing the first sliding panel, the other sliding panels are automatically opened and closed by integrated followers. The floor-mounted construction means that wide openings can be achieved without additional roof supports. The lower ball-bearing mounted carriages ensure the optimum and smooth running of the individual sliding panels. Height compensation of the ceiling rail up to 20 mm and height adjustment of the rollers up to 5 mm allow the sliding system to compensate easily for structural sagging of the eaves or lintel and permit quick and simple installation.



Unlock and slide the opening panel



Easy displacement of the elements by integrated followers

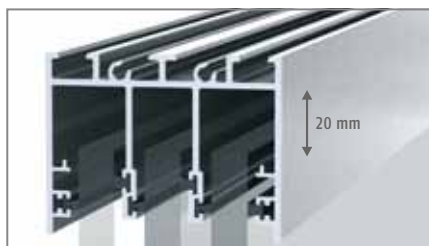


Large opening area with opened elements



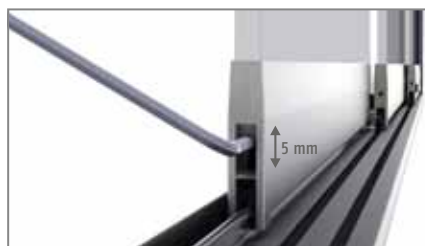
- floor-mounted sliding system
- sliding to the left or right as desired
- 15 mm panel construction depth
- with 1-, 2-, 3-, 4- or 5-track slide and guide rail
- follower function for sliding panel means system is easy to use
- floor rail with anti-slip coating can be integrated into the floor to provide an unobstructed living space
- internal or external locking of the sliding panels (optional)
- unpressurised drainage and easy cleaning due to optimum length of rails
- glazing with toughened safety glass
- panel structure of 8 or 10 mm
- powder coating (RAL) or Eloxal (EURAS)

Details



Height compensation

The ceiling rail adjusts to height differences up to 20 mm in the event of building subsidence of the upper construction.



Height adjustment

To compensate for structural variations, the integrated rollers can be adjusted in height by up to 5 mm.



Vertical frame

Increased driving rain and wind resistance through vertical frame profiles with brush gaskets, available as an option.



Drainage and cleaning

A sloping floor construction and optimally shortened rail lengths permit unpressurised drainage and simple cleaning of the floor rail. The anti-slip coating ensures that the floor rail surface is safe to walk on.



Types of handle

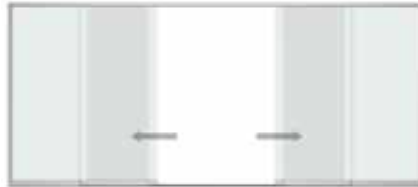
- ① Plastic knob, Ø 50 mm
- ② Stainless steel knob, Ø 50 mm
- ③ Stainless steel C-Pull handle, Ø 80 mm
- ④ Acryl glass handle

Sliding System SF 42

The SF 42 is designed as an aluminium sliding door system that provides many alternative solutions for any project. Its tensile strength enables extra-large glass panels to slide effortlessly, maximising glass area to provide uninterrupted views with minimal sightlines. It is possible to specify which of the panels are fixed - that other panels can slide behind - or to have all panels sliding, or additionally fixed plant-on panels that all panels can slide behind if required. There is the option of an extended track, running parallel behind a wall, fixed screen or into a cavity, so that the panels slide completely out of sight, providing a 100% clear opening.



Unlock and slide the opening panel



Easy displacement of the elements by integrated followers



Large opening area with opened elements



- elegant sliding door system with attractive design options, including interpane glazing bars
- narrow exterior views: frame 47 mm, casement 70 mm, glazing bar 78 mm
- opening types: 2- or 3-track with up to 6 moving casements
- max. door casement height: 3000 mm
- max. casement weight: 180 kg
- colour design with high-quality PE-F powder coating
- construction depth: 2-track 65 / 50 mm, 3-track 115 / 50 mm
- glazing thickness up to 20 mm
- high-grade steel runners
- tried-and-tested sealing system for casement and labyrinth area

Details



Profile
Non-insulated aluminium sliding system



Vertical frame
Increased water- and windtightness by three sealing levels within the labyrinth area



Design
Narrow exterior views of all profiles provide for homogenous optics



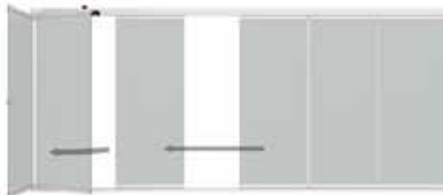
Handles
1. Locking interior
2. Locking interior with lock
3. Pull handle exterior

Slide and Turn System SF 25

SUNFLEX slide and turn systems enhance the attractiveness of any home through the contrast of glass and wall. Their individually moveable, unconnected glass panels can be opened over the entire frontage and parked as a narrow stack on the side so that an impediment-free passage from inside to outside is ensured and visual appearance is not impaired. The opened panels require very little space.



Easy opening



Easy sliding and turning of the individual elements



Large opening space when elements are opened



- low-wear and maintenance-free fittings
- different bottom tracks
- pressure-free drainage of bottom track by inclined floor construction
- catch channel at the inside of the bottom track to drain condensation and cleaning waters
- top-hung construction with a choice of flush or weather-proof bottom track options
- inwards or outwards opening of the panels
- choice of panel partition and sliding direction
- double brush seal with plastic bridge at top and bottom of the glass panels
- airborne sound insulation up to R_w 34 dB according to DIN EN ISO 140-3
- glass thickness of 6, 8, 10 and 12 mm depending on static requirements
- screwed glazing for effortless future replacement of glass

Details



frameless all-glass system



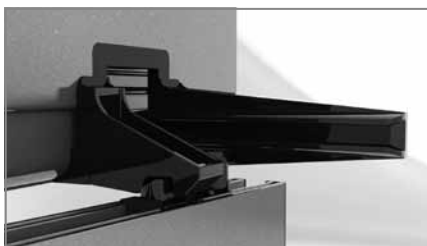
completely stainless carriage system



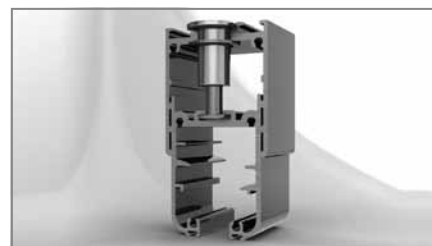
glass screwed. Glass thickness 6, 8 or 10 mm



Turn knob



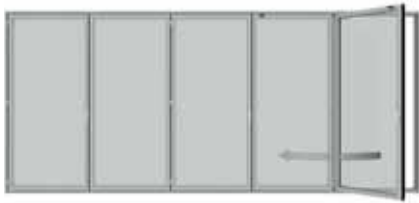
carriage recess including new gap ventilation



height compensation profile allows a height adjustment of up to 22 mm

Folding System SF 45

The big plus of the SUNFLEX folding sliding system SF 45 is its abundance of layouts and options. With different glass thicknesses or different materials, it offers the right product for any requirement. The large-scale glazing can be opened and closed comfortably by means of the interconnected panels. A transparent all-rounder with a guarantee of quality and longevity.



Easy opening of the first panel



Folding of the connected elements



Parking of the folded panels



- flush aluminium construction
- perfectly matched components
- low construction depths and slim profile designs
- choice of inwards or outwards opening folding panels
- panel distribution and folding direction of panels freely selectable
- storm-proof and burglar-resistant metal fittings
- various glazing types, lock types, colours, finishes, etc.
- easy assembly

Details



- non-insulated aluminium folding door



- burglar resistant fittings



- panel catcher for additional security to fix the pass door to the adjacent panel



Awning Windows, Casement Windows and Fixed Glazing

An awning window is appropriate for many architectural styles with an intriguing appearance when grouped with other window types. It is hinged at the top and opens outwards from the bottom in an upwards swing.

A casement window is the perfect complement to the simplicity of modern design, while also providing maximum ventilation. This type of window is hinged on either side so the sash opens outwards, to the right or left, in a swinging motion.



Colours



White
#21880



INFINITY WHITE
KL1002525



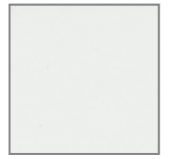
P90098AN



P90042AQ



Snow Cream
#21800



Milk Cream
#21089



P90025AN



P70315AN



TITANIUM SILVER
#KL1002835



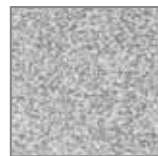
P70003AQ



Munich Grey
#21080



P90097BN



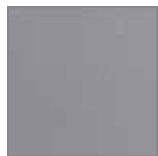
P80011AN



P80002AN



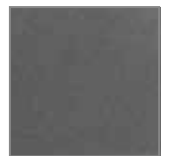
AZTEC GREY #
KL1002822



ZAGROS
#KL1018387



SILVER SAHARA
METALLIC
KL1026002



SILVER SPARKLE
METALLIC
#KL 1016937



P70160BQ



P90079WQ



Warm Grey
#21087



NUT BROWN
#KL1016116



BROWN
#KL1018489



P70441BQ



P70369XN



Eagle Black
#21081



MONKEY POD
#9103 402



GOLDEN TEAK
#9061 402



BROWN TEAK
#9061 403



RED TEAK #
9061 406



MAKHA WOOD
#9154 403

Please note:
The colors are not true to color and are different from the original.



Glazed Folding Doors



Terrace and Conservatory Glazing



Balcony and Facade Glazing



Exterior Sliding Door

